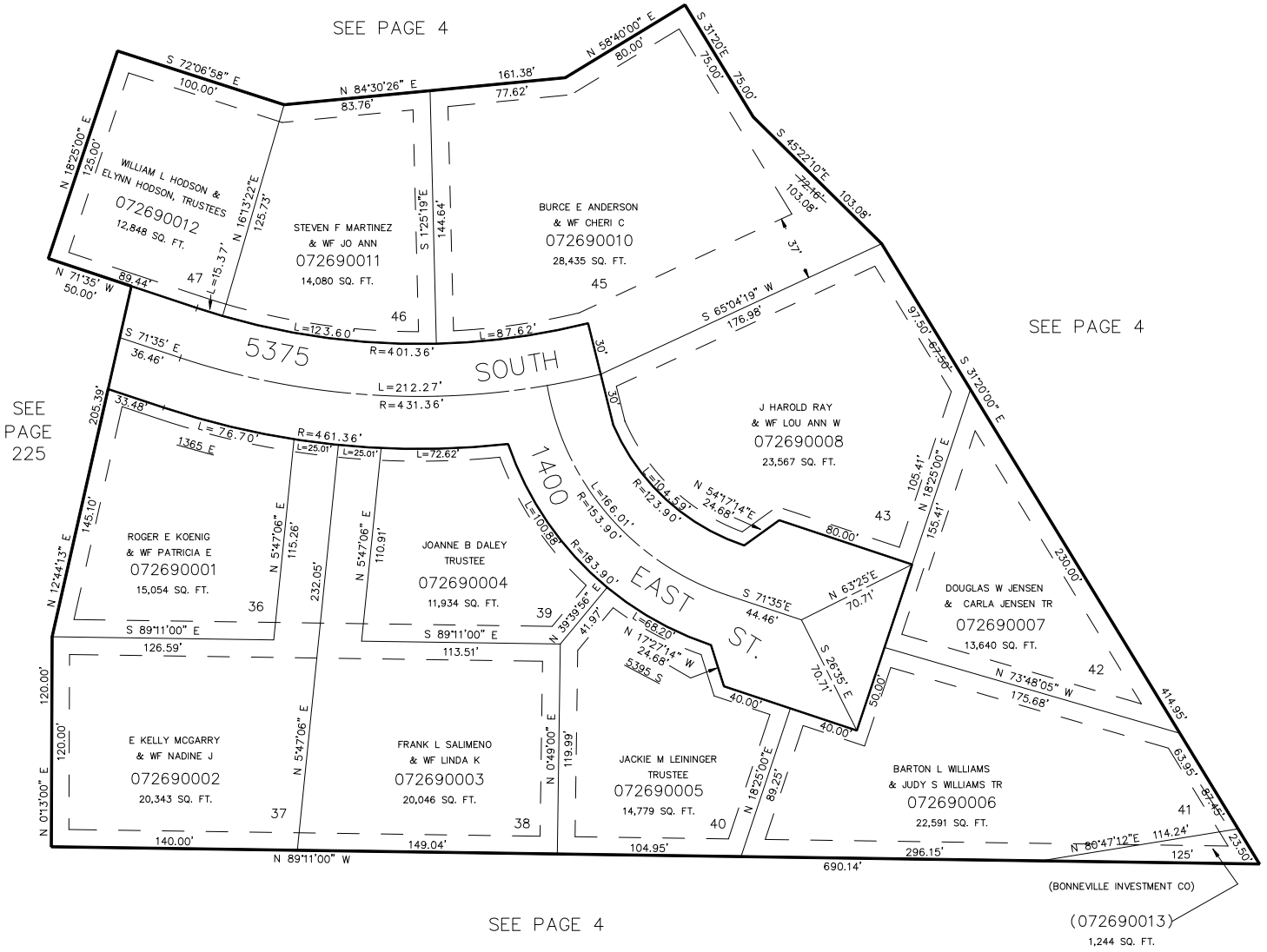


PART OF S.W. 1/4 SEC. 15, T.5N., R.1W., S.L.B. & M.
OAK CREEK ESTATES PHASE 4

*LOTS 43 & 45 AMENDED

TAXING UNIT: 27

IN SOUTH OGDEN CITY
 SCALE 1" = 50'



10' UTILITY EASEMENTS EACH SIDE OF PROPERTY
 LINE AS INDICATED BY DASHED LINES. ALL ESMTS
 TO BE USED FOR IRRIG, WATERLINES, DRAINAGE,
 SANITARY & STORM SEWERS, POWERLINES, TELEPHONE
 LINES & OTHER PUBLIC UTILITIES. FRONT PROPERTY
 LINE UTILITY EASEMENTS ARE 7' WIDE. OTHERS AS SHOWN.

FOR COMPLETE ENG DATA SEE
 ORIGINAL DEDICATION PLAT IN
 BOOK 23, PAGE 86 OF RECORDS.
 *BOOK 26, PAGE 3, AMENDED.